

Montagebeispiele QuickLift AutoLift

Fiat Peugeot Citroen X 250 vorne Teile:



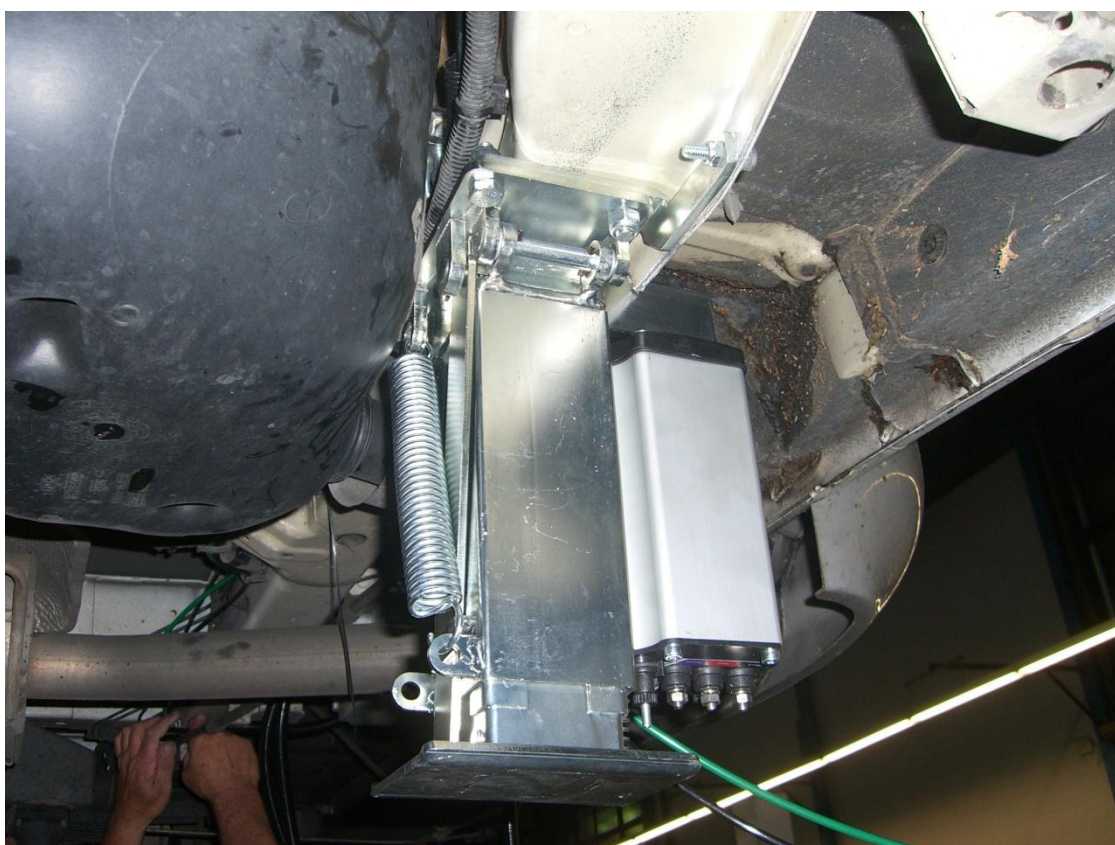
Fiat Peugeot Citroen X 250 vorne rechts:



Fiat Peugeot Citroen X 250 vorne links:



Fiat Peugeot Citroen X 250 vorne links:



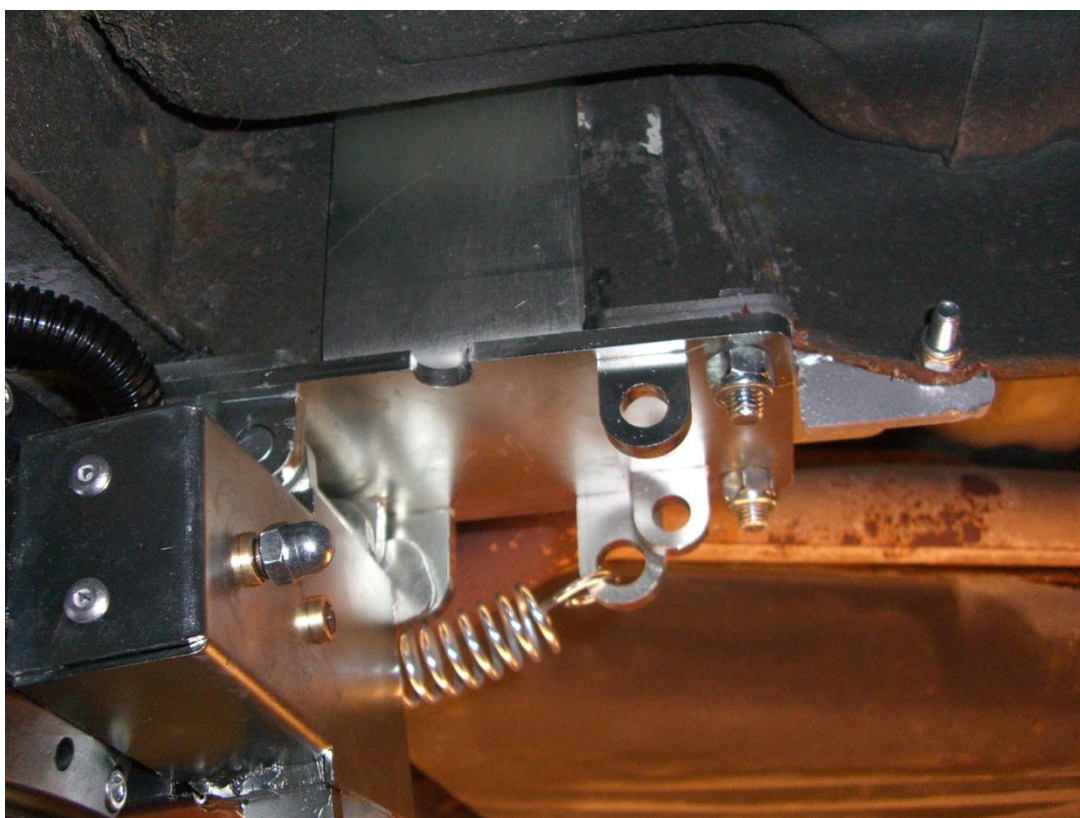
Fiat Peugeot Citroen X 250 hinten mit Adapterbalken vor der Hinterachse Art.-Nr. 104232:



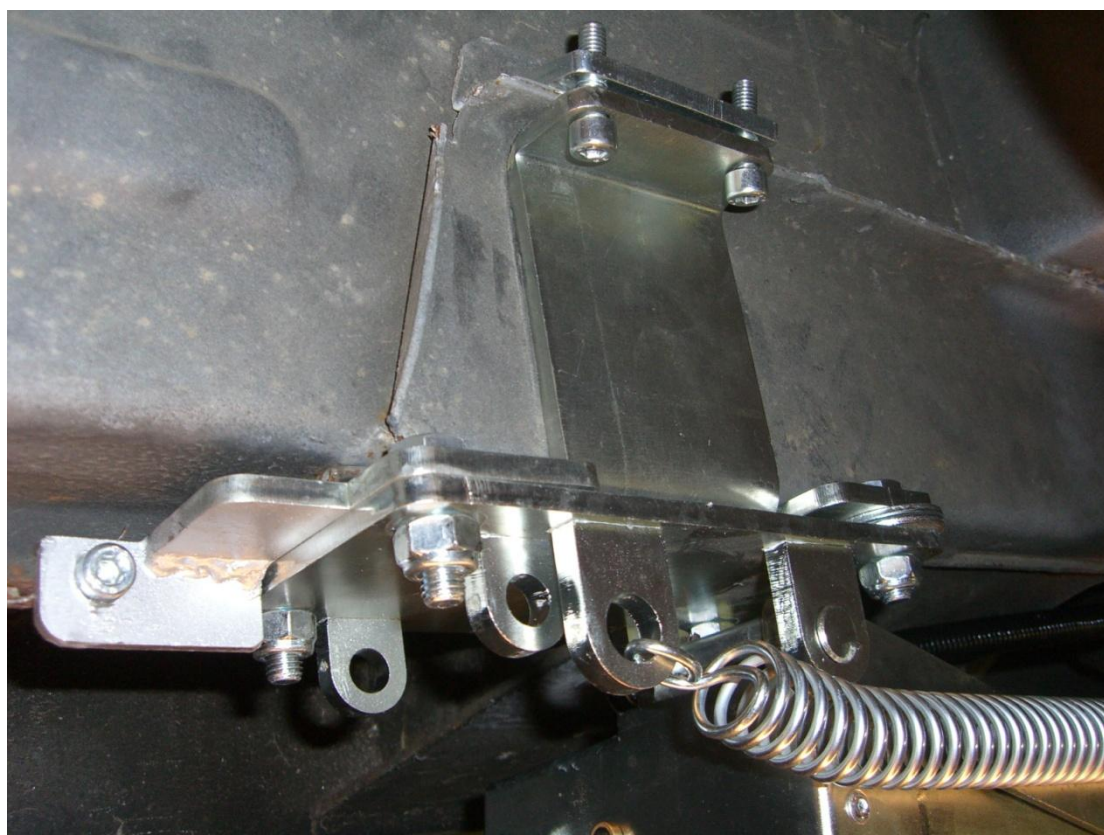
Fiat Peugeot Citroen X230 / X244 vorne



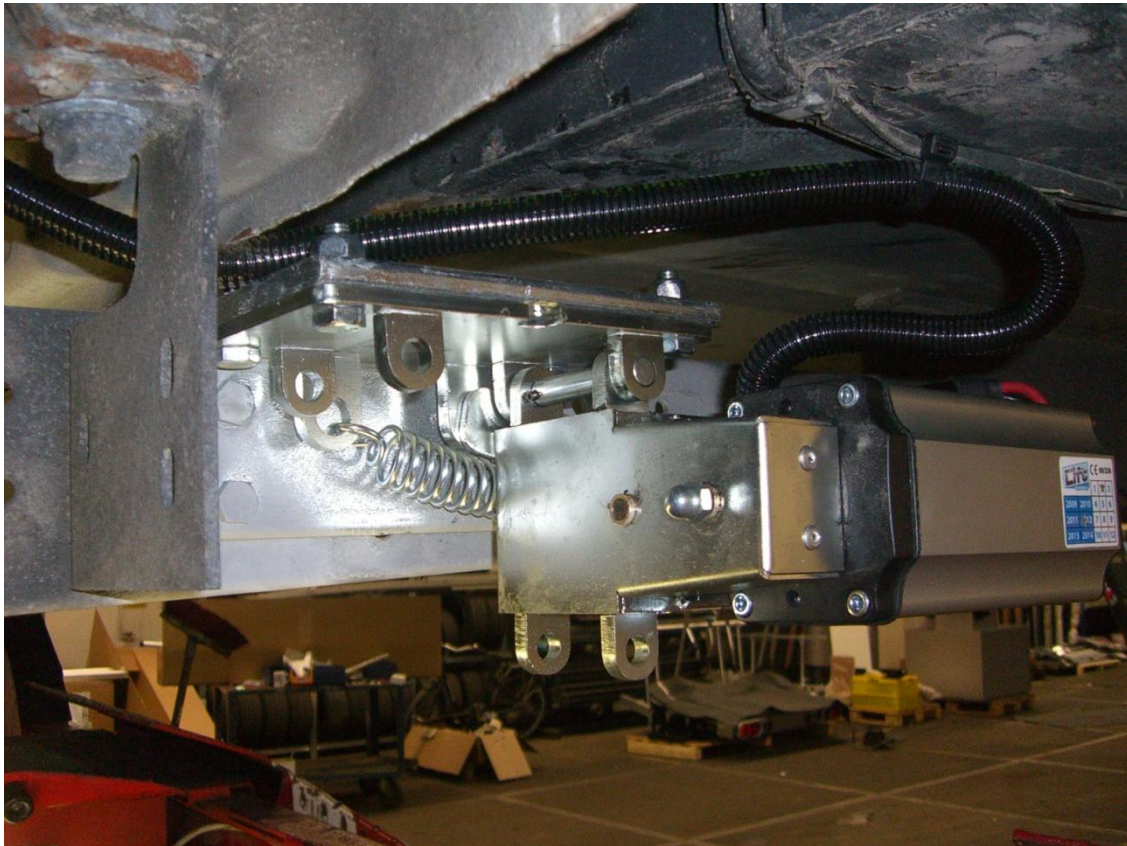
Fiat Peugeot Citroen X230 / X244 vorne rechts



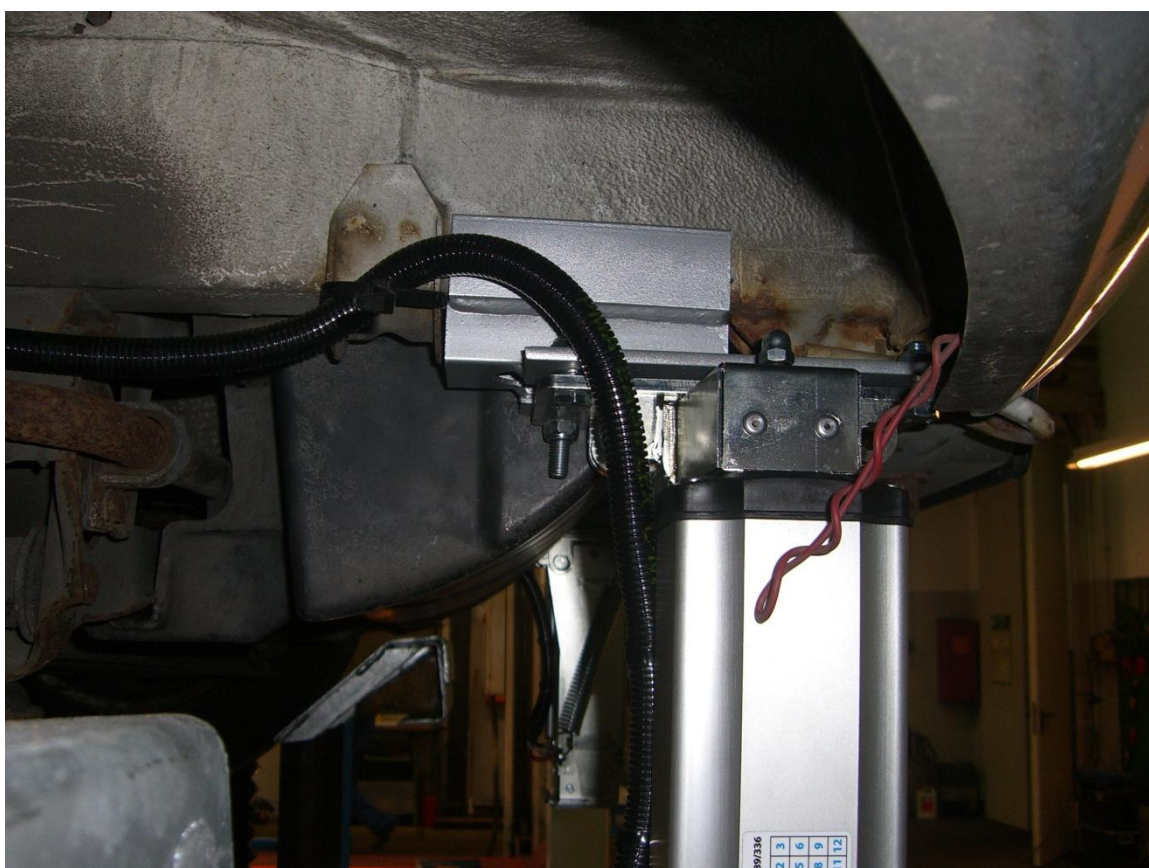
Fiat Peugeot Citroen X230 / X244 vorne links



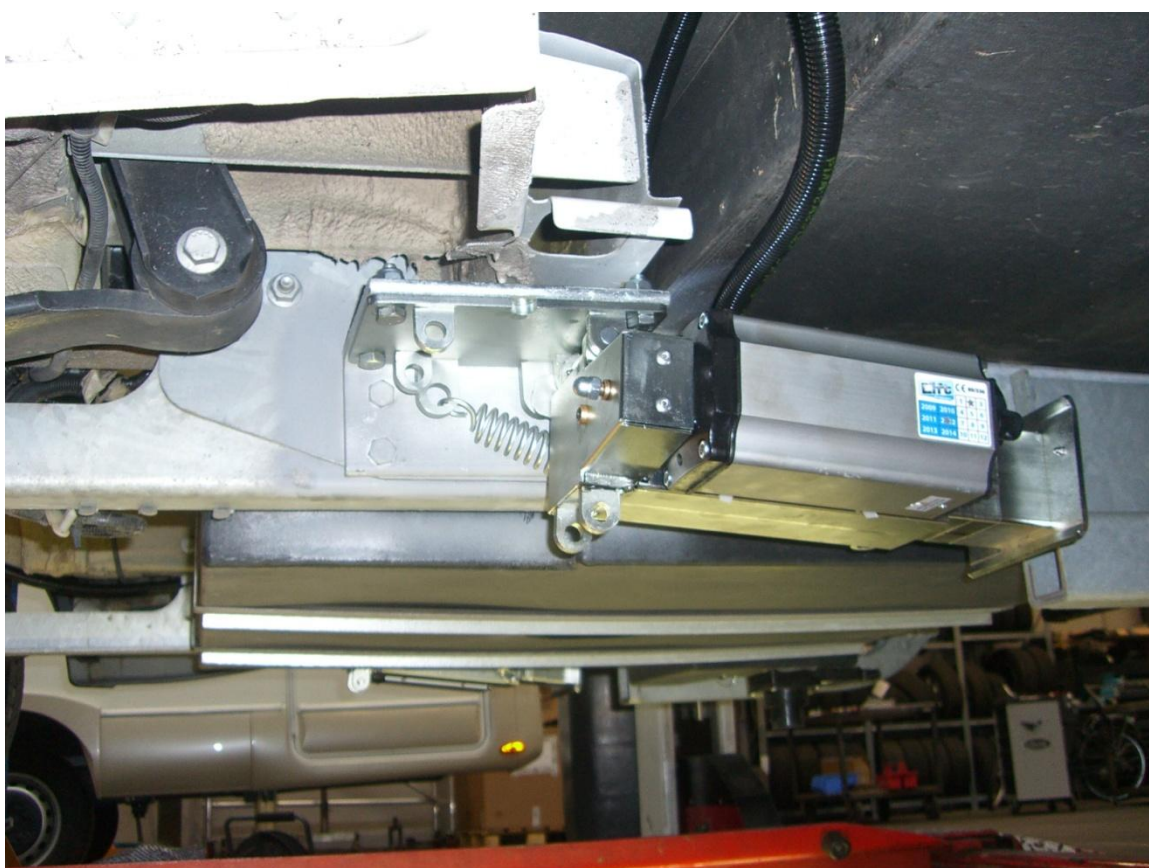
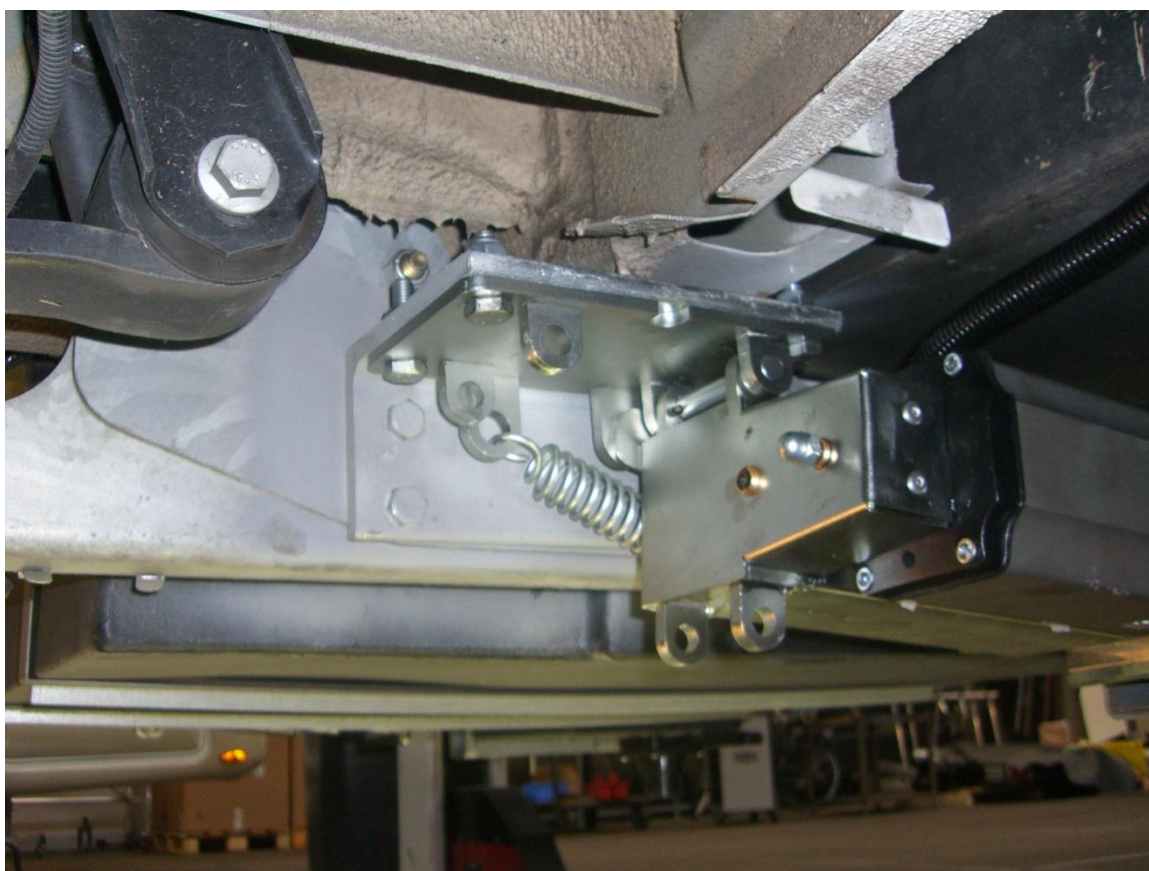
Fiat Peugeot Citroen X230 / X244 hinten mit Universalwinkel an **stabiler** Rahmenverlängerung



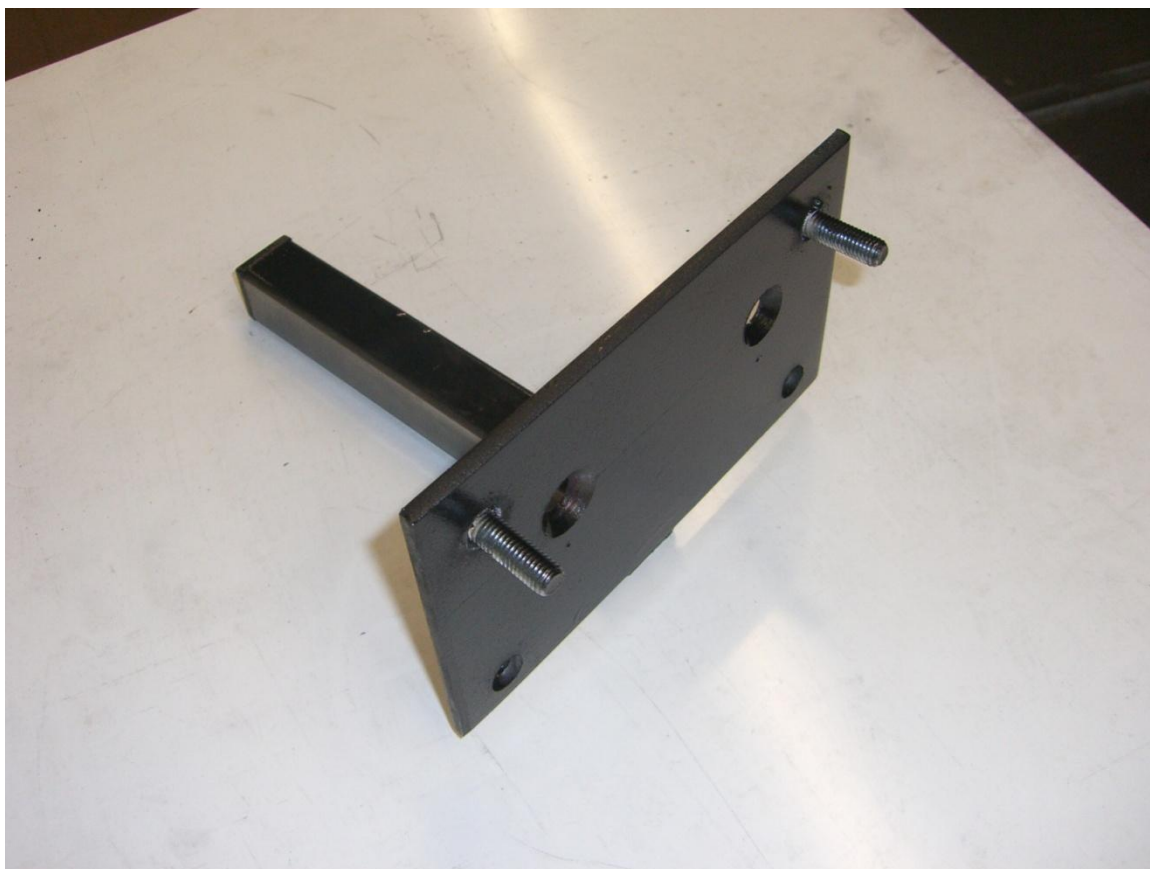
MB Sprinter (WDB904) vorne:



Ford Transit ab 2006 hinten



Ford Transit vorne

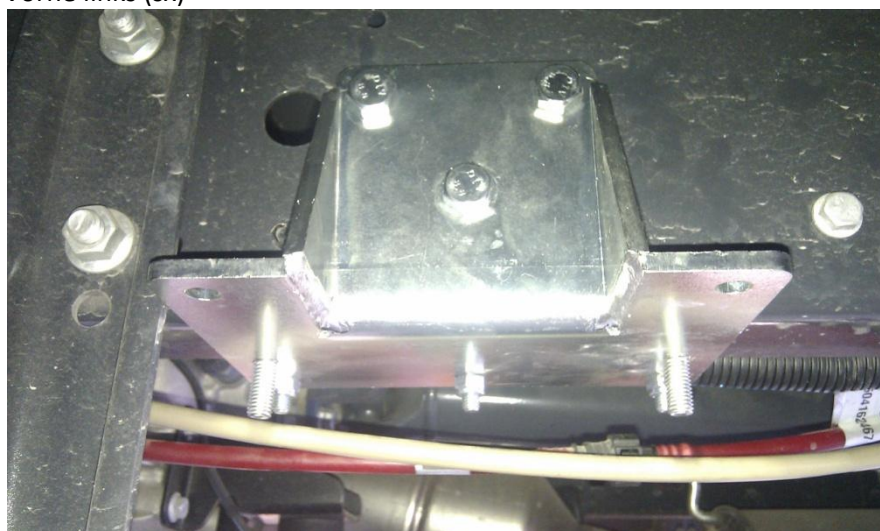




Iveco Daily 35 (4er Adaptersatz Art,-Nr. 14233)



Vorne links (sx)



Vorne rechts



Hinten links

