
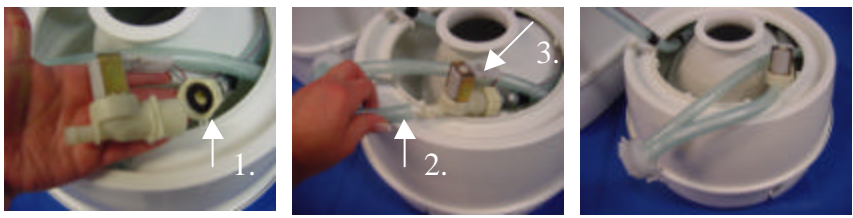


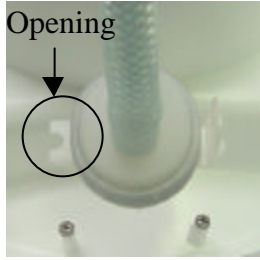
23709 Electric Valve

- A.**  Pull the waste tank out of the Cassette toilet by lifting up the yellow clip. 
- B.** Inside view, part is assembled with 4 screws (2 in front, 2 at the back).    
- C.** This bracket  is 3x assembled around the toilet bowl. Each bracket has two screws.    
- For bracket nr. 3, we advise you to use a mirror as the bracket is very difficult to see. 
- D.** When all the parts are unscrewed, the toilet bowl can be taken off.   Looking into the toilet bowl, the electric valve can be found.  Electric valve
- E.** By taking out the vacuum breaker it is easier to replace the electric valve  Vacuum breaker  Press against upstanding rib (1) and the part can be taken out.  1. 
- F.** Make the electric valve on both sides loose from the tubes and, pull both connectors loose.  1.  2. Hose barb  3.
1. Can be pulled off
2. Unscrew the hose barb
3. Can be pulled off

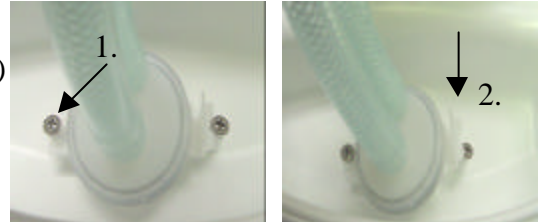
G. Replace electric valve.
 1. Screw hose barb onto the electric valve
 2. Push water tube onto the electric valve
 3. Press both connectors onto the electric valve.



H. Place vacuum breaker back into position the following way.



Place the opening around the screw (1) and press the other side in (2).



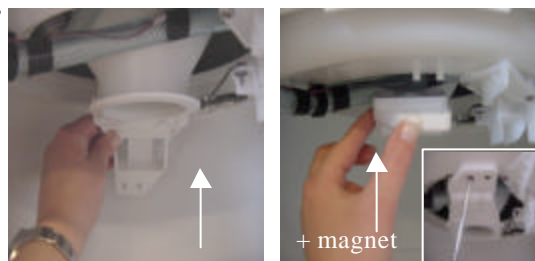
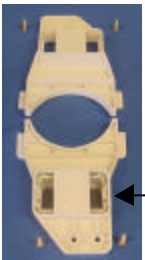
I. Place complete water tube back into the toilet bowl and, place toilet bowl back in position.



J. Screw the 3 brackets back around the toilet bowl.



K. Screw both brackets back into position



Place waste tank back into the toilet



Note : Bracket with the magnet in it, has to be placed in the front.